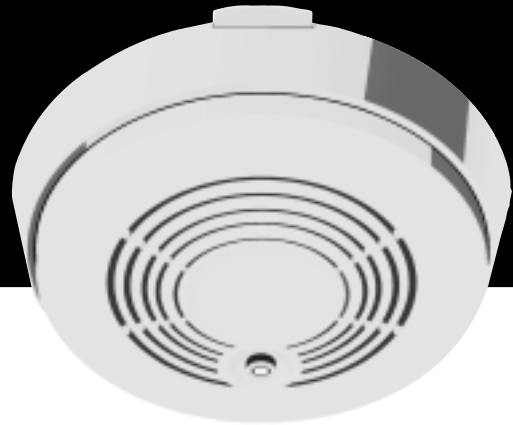


Smoke Detectors



"Don't Stay Home Without One"



The City of Minneapolis Housing Maintenance Code requires that all dwellings in the city be equipped with smoke detectors. This brochure will help you understand their importance and determine the best locations to install smoke detectors in your home or rental property.

Why have a smoke detector?

Every year in the United States, approximately 5,000 people are killed and more than 40,000 people are injured in residential fires. Many fire victims die from inhaling smoke and toxic gases, not because of burns. Most deaths and injuries occur in fires that happen at night while the victims are asleep. People sleeping must be warned before it is too late. In addition, home fires do more than \$8 billion worth of property damage.

When properly installed and maintained, the home smoke detector is one of the best and least expensive ways to provide early warning when a fire begins. The alarm will sound before the concentration of smoke reaches a dangerous level, or before the fire becomes too intense. Smoke detectors save lives, prevent injuries, and minimize property damage. The risk of dying from fire is twice as high in homes that do not have functioning detectors.

How many do I need?

In an existing home, the Minneapolis housing maintenance code requires a minimum of one smoke detector on every level of the home and outside each sleeping area. These smoke detectors may be battery operated.

Smoke detectors should be mounted on the ceiling. Do not mount a smoke detector in a corner area or within three (3) feet of a door leading to a bathroom or kitchen.

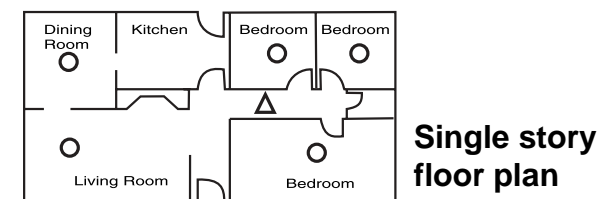
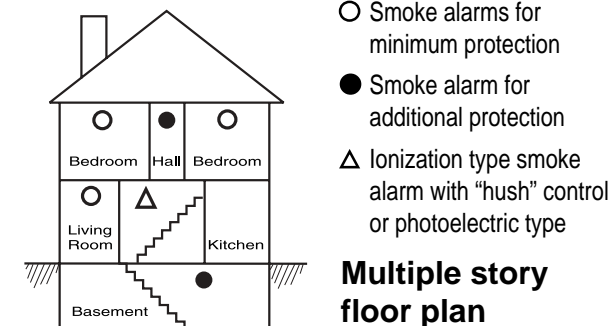
Smoke detectors that are located within twenty (20) feet of a cooking appliance shall be photoelectric or equipped with a silencing switch.

In a newly constructed home, the code now requires all hardwired smoke detectors to be interconnected so that if one smoke detector is activated, all smoke detectors in the house will sound the alarm. New homes are also required to have a smoke detector installed inside each room used for sleeping.

What kind of smoke detector should I buy?

Each type of detector, when properly installed and maintained, is effective. Photoelectric detectors react more quickly to smoldering fires, and ionization units will respond faster to flaming fires. You may wish to buy a combination detector. These units are very affordable; a combination detector with both photoelectric and ionization sensors along with a silencing switch is less than \$20.00. They can be purchased at home supply centers and hardware stores. However, because most home fires produce a mixture of smoke types with detectable amounts of large particle and small particle smoke early in the fire growth, either an ionization or a photoelectric detector will meet most needs.

Model for existing home:



Visit our Web site at
www.ci.minneapolis.mn.us/inspections/
to review other need-to-know topics:

- Rental license standards
- Reinspection fee
- Rental property management—best practices
- Healthy home & lead hazard control
- Smoke detectors
- Boarded building and vacant building registration
- Property checklist of possible code violations
- Rental license application
- 4BB—tax classification
- “Graffiti”
- Citizens Inspections Program
- Forms, fees and applications



Housing Inspection Services
250 S. 4th St. – Room 300
Minneapolis, MN 55415

(612) 673-5858

www.ci.minneapolis.mn.us